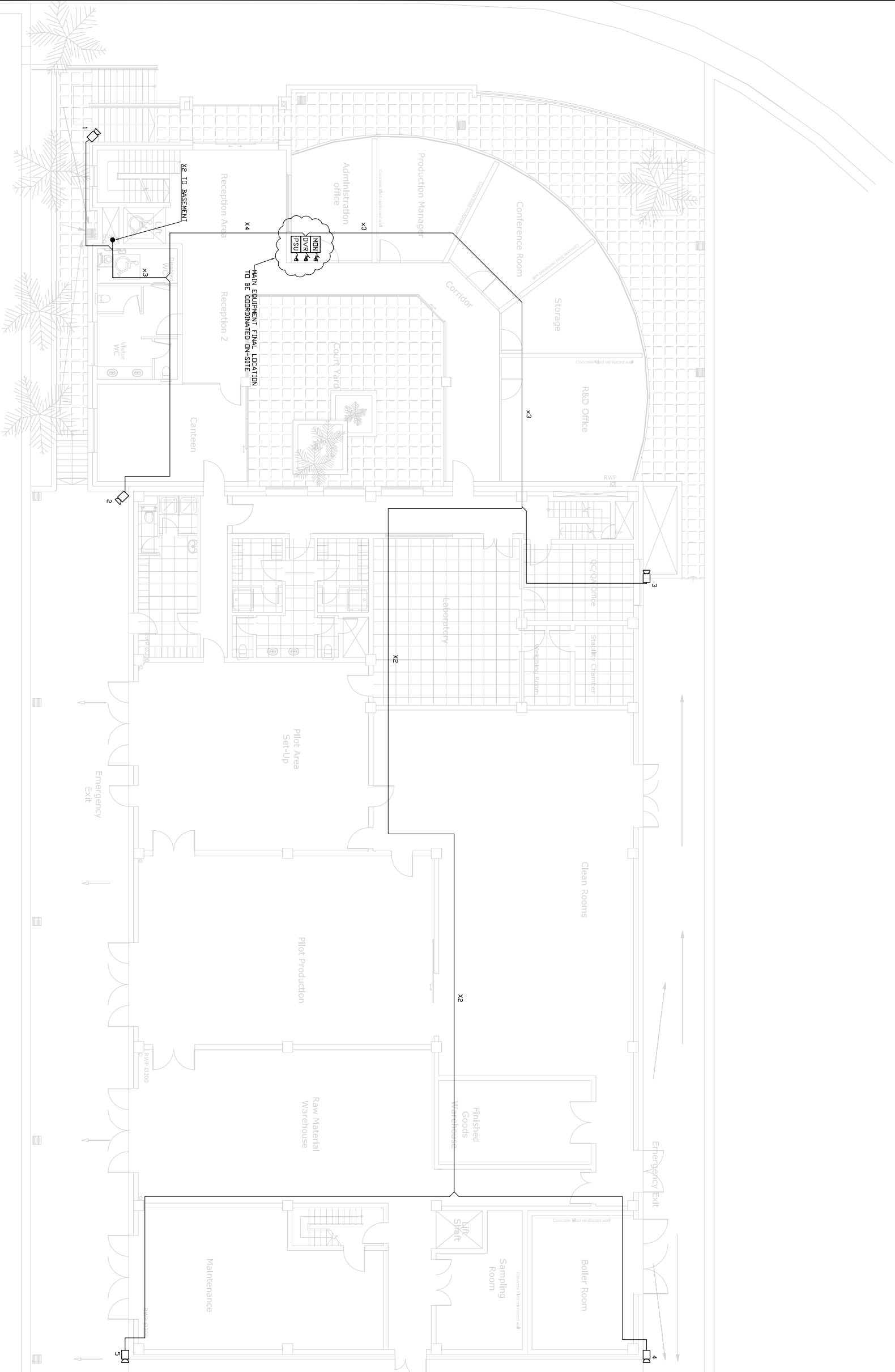


LEGEND

- ☐ WEATHER-PROOF HODD CAMERA – HD-PRO – P590HTL
- DVR 16-CHANNEL DVR – HK VISION – DS-7316H-S
- MON 19" LCD MONITOR – LJB – LCDHMI-1902
- PSU 12VDC 10A POWER SUPPLY UNIT – POWER-PLEX – SWM1000
- CABLE + SUPPLY CABLE – NIREBAIN – RG59 + 2CDRE
- CABLE CHANGE IN LEVEL
- ▲ 230V SUPPLY THROUGH 3-PIN SOCKET OUTLET (PROVIDED BY OTHERS)
- ▲ 230V SUPPLY THROUGH FUSED OUTLET (PROVIDED BY OTHERS)



NOTES

- CONTROL EQUIPMENT INCLUDING CAMERAS SUPPLIES TO BE PLACED IN UNAUTHORIZED PERSONNEL, SUCH AS POSSIBLE UNREACHABLE FROM
- CABLE ROUTES TO FOLLOW UNOBSTRUCTIVE PATHS TO AVOID ANY
- TAKING INTO ACCOUNT REACH OR WITHIN UNSAFE AREAS SHALL BE
- MECHANICALLY PROTECTED
- ALL EXTERNAL CABLES TO BE MECHANICALLY PROTECTED
- CONTROL EQUIPMENT TO BE SECURED FROM LOU, VANDALISM, VIBRATION, AND RESISTIVE MULTIPLEXERS TO BE SUPPLIED FROM THE SAME PHASE.

Rev. no	Date	Modification	DA	JB
A	16/05/13	AS FITTED		



Alberta, Sun Graham Rd, Medical Bldg 3000, Medicine
Website: www.alberta.com
TEL: (403) 244-0000
FAX: (403) 244-0007

JOB TITLE:	STERLING SNIFF – HAL FAR
JOB NO.:	15237

DRAWING TITLE:

AS FITTED
CCV SYSTEM
PLAN VIEW
GROUND FLOOR

DETAILED DESIGN DRAWING ISSUED BY: CAMILLER & DISCHER

INSTALLATION DRAWING

DESIGNED BY: ROBERT PARRUGIA	SCALE: 1:100 (A1)
DRAWN BY: ANDREAS ONI	DATE: 04 OCT 12
CHECKED BY: MATTHEW CASSAR	DRAWING NO: S04/12/CC-010

